

Il Cavalier King Charles Spaniel nella Pittura

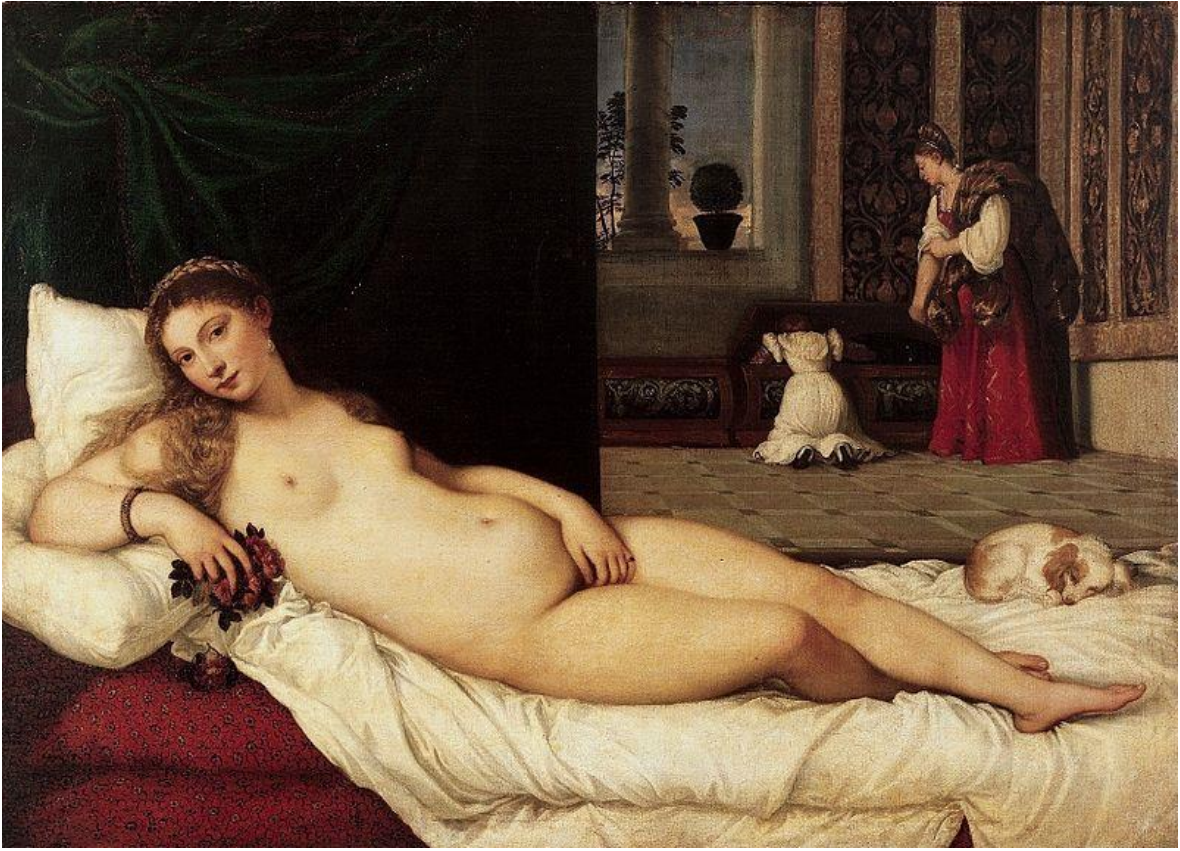
*“In omaggio a Luna,
la mia prima ed indimenticabile
Cavalier King Charles Spaniel”
Claudio Pasi*



Agnolo di Cosimo detto Bronzino, *Ritratto di dama con cagnolino*, c. 1530-1533
(Francoforte, Städel Museum)



Tiziano Vecellio, *Ritratto di Eleonora Gonzaga Della Rovere duchessa di Urbino*, 1536-38
(Firenze, Galleria degli Uffizi)



Tiziano Vecellio, *Venere di Urbino*, 1538
(Firenze, Galleria degli Uffizi)



Tiziano Vecellio, *Ritratto di Clarissa Strozzi*, 1542
(Berlino, Gemäldegalerie)



François Clouet, *Hercule- François duc d'Alençon*, 1556-58
(Collezione privata)



Hans Eworth, *Portrait of King Felipe II of Spain and Queen Maria I of England*, 1558
(Woburn Abbey, Bedford Collection)



Paolo Veronese, *Giustiniana Giustiniani e la nutrice*, 1560-1561
(Maser, Villa Barbaro)



Sofonisba Anguissola, *Le Infante di Spagna Isabella Clara Eugenia e Catalina Micaela*, 1570
(ubicazione ignota)



Sofonisba Anguissola, *Tre bambini con cane*, c. 1570-1590
(Corsham Court, Collezione Lord Methuen)



Bartolomeo Passarotti, *Ritratto del conte Sertorio Sertori*, XVI sec.
(Modena, Galleria Estense)



Pieter Paul Rubens, *Betsabea al bagno*, c. 1635
(Dresda, Gemäldegalerie)



Pieter Paul Rubens , *La nascita di Luigi XIII*, (1622-25)
(Parigi, Museo del Louvre)



Justus van Egmont, *Charles II of England as Prince of Wales*, 1630
(London, National Portrait Gallery)



Antoon van Dick, *Young King Charles II of England with his spaniel*, 1635
(Windsor, Royal Collection)



Antoon van Dick, *The five eldest children of Charles I*, 1637
(Royal Collection)



Gerard ter Borch, *A Lady at Her Toilet*, c. 1660
(The Detroit Institute of Arts)



Jan Steen, *Die verkehrte Welt* [Il mondo alla rovescia] o *Nella lussuria, fa' attenzione*, c. 1663
Wien, Kunsthistorisches Museum)



Gilbert Jackson, *Portrait of a young lady in a red dress with a pet Spaniel*, XVII sec.
(London, Private Collection Richard Philp)



Jan Verkolje, *Portrait of a lady holding her pet King Charles spaniel*, sec. XVII
(ubicazione ignota)



Jan Verkolje, *Portrait of Margaretha Delff*, 1674
(Hartford, Connecticut, Wadsworth Atheneum)



Jan Verkolje, *Spaniel*, 1684 (mezzatinta)
(London, British Museum)



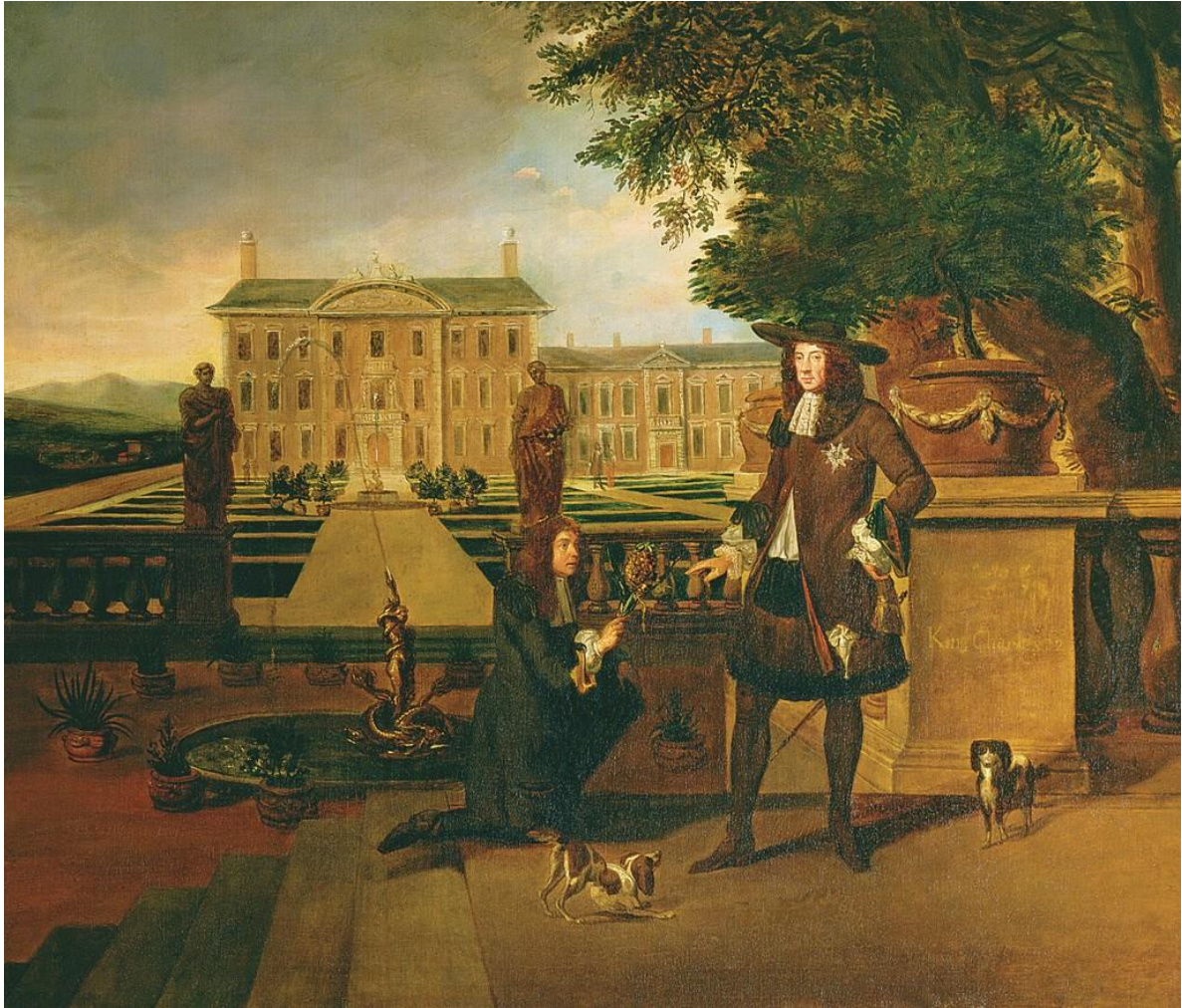
Pierfrancesco Cittadini, *Ritratto di ragazza con cane*, sec. XVII
(Collezione privata)



Pierfrancesco Cittadini, *Ritratto di bambina*, sec. XVII
(Ajaccio Palais Fesch, Musée des beaux-arts)



Henri Gascard, *Louise de Keroualle, Duchess of Portsmouth*, 1670 ca.
(Auckland, Art Gallery Toi o Tāmaki)



Hendrick Danckerts, *John Rose the King's gardener, presenting Charles II with a pineapple*, 1675
(UK, The Stapleton Collection)



Benjamin Block, *Kaiser Josef I*, 1684
(Wien, Kunsthistorisches Museum)



William Hogarth, *Woodes Rogers and his family*, 1729
(Greenwich, National Maritime Museum)



William Hogarth, *The Jones family conversation piece*, 1730
(Cardiff, National Museum)



William Hogarth, *Before*, 1730-31
(Los Angeles, J. Paul Getty Museum)



William Hogarth, *After*, 1730-31
(Los Angeles, J. Paul Getty Museum)



Follower of William Hogarth, *Portrait of a Young Girl*, 1742-45
(New York?)



William Hogarth, *Portrait of the Mackinen Children*, 1747
(Dublin, National Gallery of Ireland)



Jean-Marc Nattier, *Madame la Comtesse d'Argenson*, 1743
(Collezione privata)



Jacques-Charles Oudry, *Portrait de Cavalier King Charles*, 1752
(Collezione privata)



John Singleton Copley, *Mrs. Jerathmael Bowers*, c.1763
(New York, The Metropolitan Museum of Art)



John Singleton Copley, *The three youngest daughters of George III*, 1785
(London, The Royal Collection)



Joshua Reynolds, *Miss Bowles*, 1775
(London, The Wallace Collection)



Joshua Reynolds, *Master Crewe as Henry VIII*, 1775
(Private Collection)



Joshua Reynolds, *The Marlborough family*, 1777-78
(Blenheim Palace, Oxfordshire, England)



Joshua Reynolds, *The Brummell children*, 1781-82
(London, Kenwood House)



George Stubbs, *A liver and white King Charles spaniel in a wooded landscape*, 1776
(Private Collection)



Thomas Gainsborough, *Queen Charlotte*, 1781
(London , The Royal Collection)



George Romney, *Lady Hamilton as Nature*, 1782
(New York, Frick Collection)



Sawrey Gilpin, *Cavalier King Charles Spaniel*, XVIII sec.
(Unionville, Pennsylvania, Collection of Sir John & Lady Esther Thouron)



Jacob Philipp Hackert, *A King Charles Spaniel in a landscape*, 1788
(London, Private Collection)



Richard Westall, *Portrait of a woman in a landscape with a spaniel*, 1793
(London, British Museum)



Henry Bernard Chalon, *An English Water Spaniel*, 1797
(ubicazione ignota)



Henry Bernard Chalon, *A Blenheim Cavalier King Charles spaniel on a riverbank*, XVII-XIX sec.
(ubicazione ignota)



Henry Bernard Chalon, *Blenheim King Charles Spaniel in a landscape*, 1816
(ubicazione ignota)



Henry Bernard Chalon, *A Blenheim King Charles Spaniel*, 1840 (?)
(ubicazione ignota)



Attributed To John Constable, R.A. 1776 – 1837

Study of a sleeping spaniel
pencil on heavy off-white wove paper, 73 X 134 mm



Attribuito a Alfred Edward Chalon, *Lady with flowers and King Charles spaniel*, c. 1820
(UK)



Christopher Pierson, *Two King Charles Spaniels playing with a frog*, XIX sec.
(ubicazione ignota)



Henry Wyatt, *The pet spaniel*, XIX sec.
(Collezione privata)



Circle of George Henry Harlow, *Portrait of Mary Aston Walker, née Hoggart (b.1809), half-length, in a white dress, with a King Charles spaniel*
(ubicazione ignota)



James Loder, *A tricolour Cavalier King Charles spaniel*, XIX sec.
(ubicazione ignota)



Edwin Henry Landseer, *A dog of the Marlborough breed*, 1819?
(Collezione privata)



Edwin Henry Landseer, *Queen Victoria's Dogs and Parrot*, 1833-1834
(London, The Royal Academy)



Edwin Henry Landseer, *Beauty's bath*, c. 1835
(UK)



Edwin Henry Landseer, *Dash*, 1836
(London , The Royal Collection)



Edwin Henry Landseer, *King Charles Spaniels* (“*The Cavalier’s Pets*”), 1845
(London, Tate Gallery)



Edwin Henry Landseer, *A King Charles Spaniel*, sec. XIX
(UK)



Samuel Raven (1775-1847), *A toy spaniel on a terrace of a country house*
(Collezione privata)



British School, 19th Century, *Portrait of Spaniels Signed J. Clark*" l.r.



Joos Vincent de Vos (1829-1875), *Three little dogs*, 1876
(Belgio, Collezione privata)



Joos Vincent de Vos, *King Charles spaniels*, s. d.
(Belgio, Collezione privata)



Joos Vincent de Vos, *Best friends*, c. 1870
(Belgio, Collezione privata)



Joos Vincent de Vos, *Bedtime*, c. 1870
(Belgio, Collezione privata)



H. Willis, *Blenheim Cavalier King Charles Spaniel*, 1936
(UK, Private Collection)



Arthur J. Stark (1831-1902), *A Cavalier King Charles spaniel lying on a red cushion*
(London, Private Collection Bonhams)



Édouard Manet, *A King Charles Spaniel*, 1866 ca.
(Washington, The National Gallery of Art)



Édouard Manet, *La ferrovia*, 1873
(Washington, The National Gallery of Art)



Auguste Renoir, *Tête de chien*, 1870
(Washington, The National Gallery of Art)



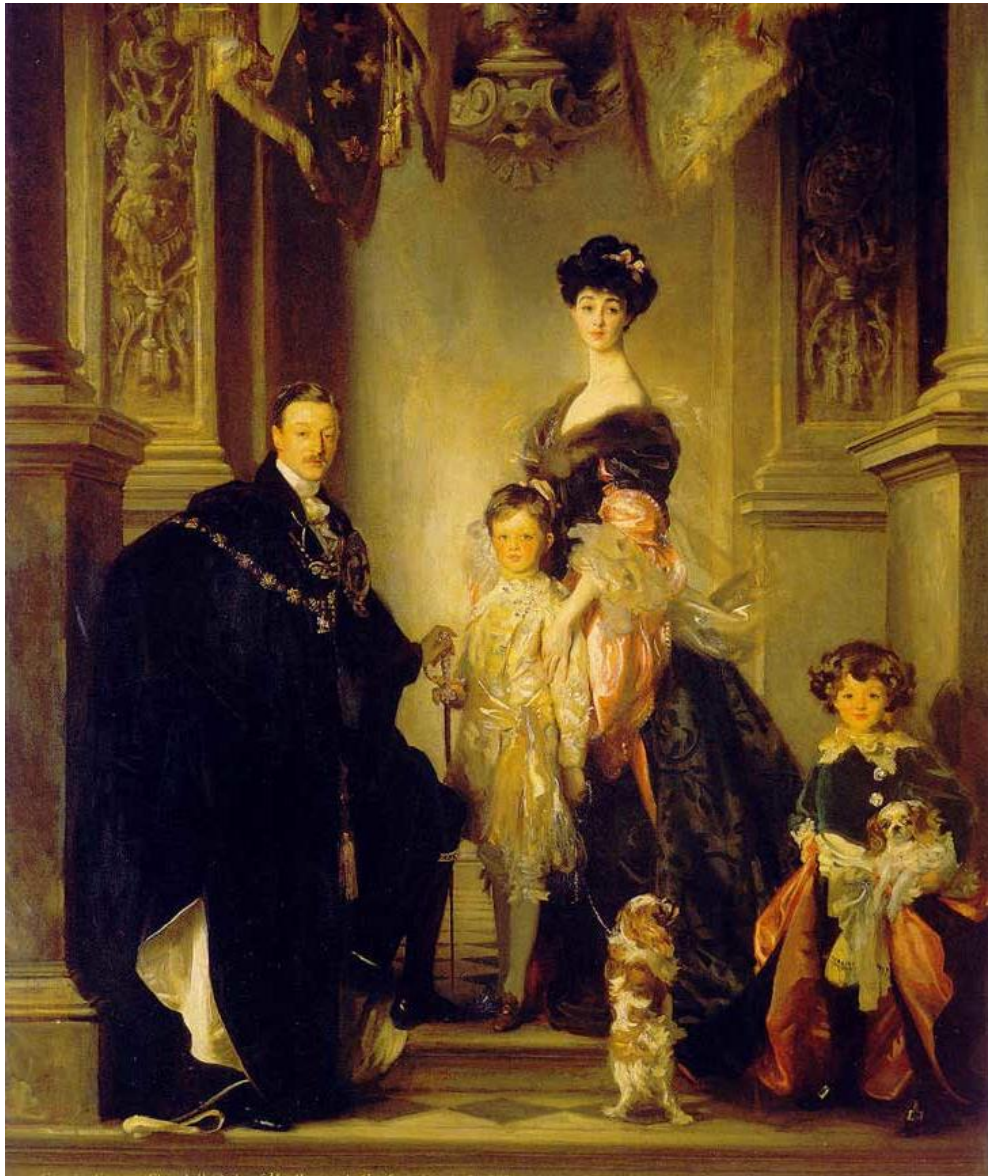
Edward Matthew Ward, *King Charles II*, XIX sec.
(ubicazione ignota)



William Powell Frith, *The last sunday of Charles II*, 1867
(UK, Private Collection)



Scuola americana del XIX secolo, *Portrait of a young girl with her Spaniel*, 1840
(ubicazione ignota)



John Singer Sargent, *Portrait of the 9th Duke of Marlborough with his family*, 1905
(Blenheim Palace, Oxfordshire, England)



Jean Leon Gerome Ferris, *Captain Kidd in New York harbor*, 1932
(Washington, Library of Congress)